

Subject :

Femco® – No-Spill Drain Systems

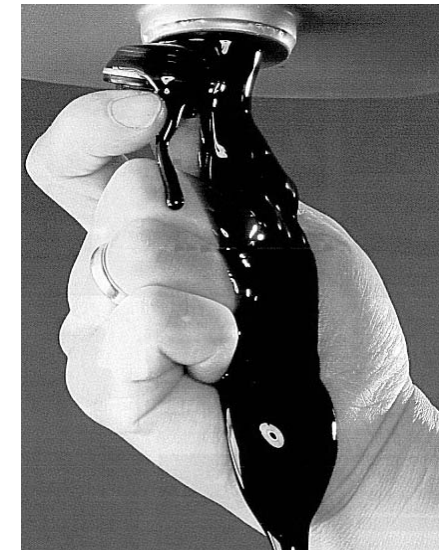
Date of Issue
11 / 2002

We are pleased to provide our latest parts bulletin for Femco® No-Spill drain systems.

The Femco® No-Spill drain system enables quick and clean draining of engine oils, gearbox oils and also radiator fluids.

Femco® Drain Technology is :-

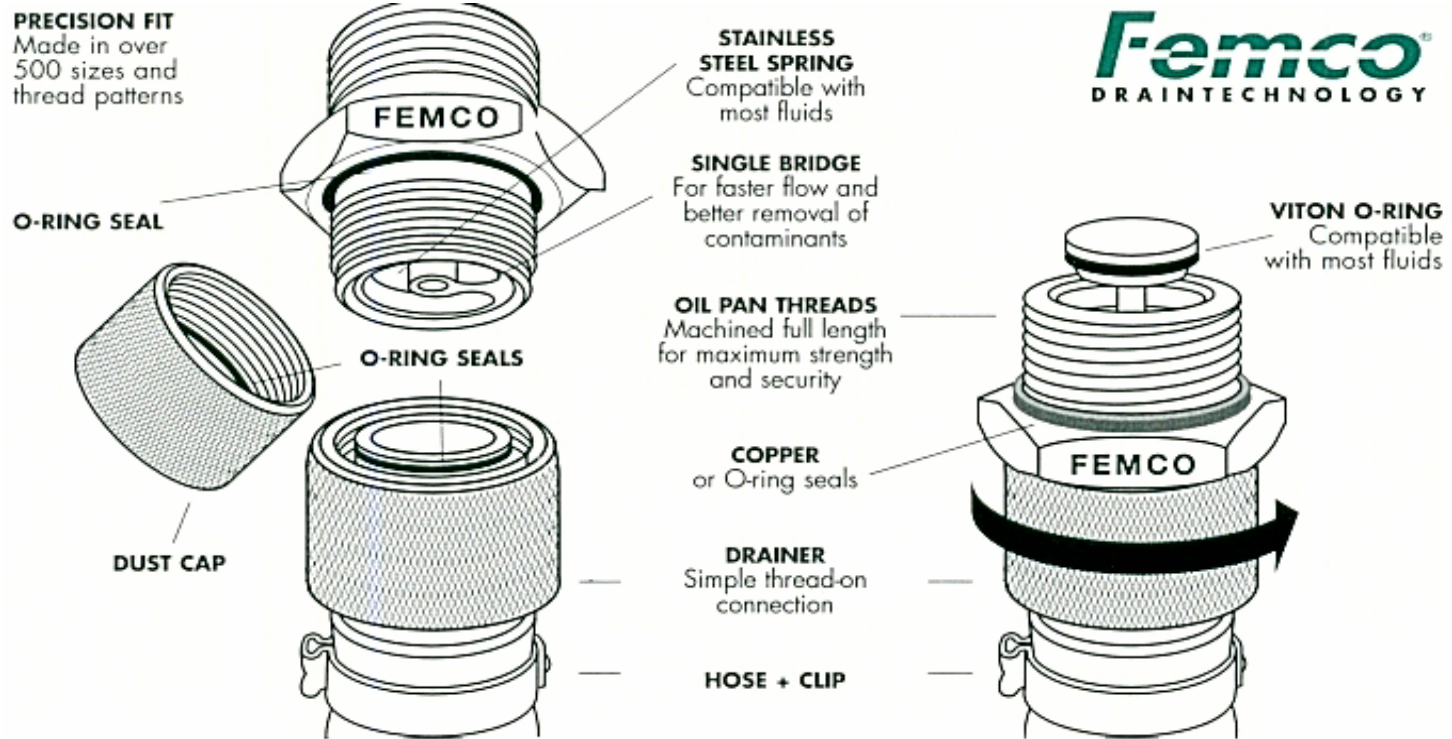
- **Unique** – Endless application possibilities, all different types and sizes are available i.e. metric, UNF, UNC, UNS, BSW, BSP, NPT etc.
- **Fast** – Oil changes can be carried out anywhere.
- **Cost Saving** -All Femco® drain plugs are fitted with a “full-bore” fitting, this design considerably speeds up the draining process thus saving labour costs.
- **Clean** – No risk of getting hot oil on your hands, clothes or over the work floor.
- **Economical** – Prevents damage to the sump. Minimizes the chance of contamination by dirt and rubbish. No replacement plugs required.
- **Environmentally Friendly** – Eliminates pollution of the environment caused by oil spillage.
- **Convenient** – Various extra accessories are available i.e. angled drainer, magnetic plugs, oil sampler etc.



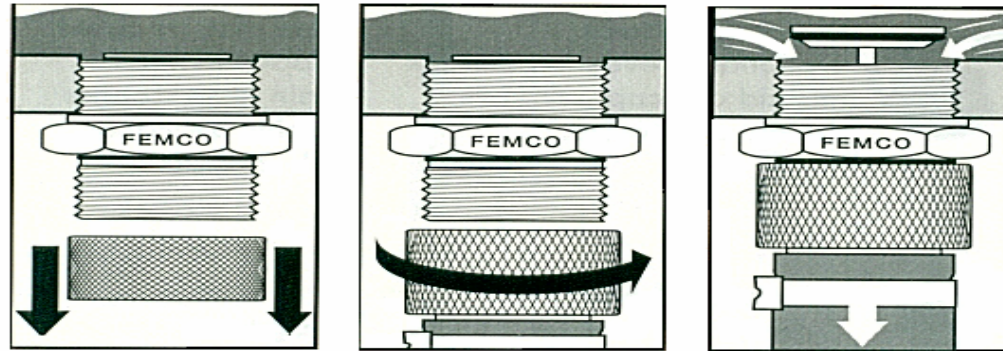
**NO MORE
DIRTY HANDS**

Should you wish to place an order or require information on any parts not listed contact our sales team on Tel : 01274 531531 or Fax : 01274 531088.

STANDARD – XXL – COMPACT



STANDARD & XXL



STANDARD

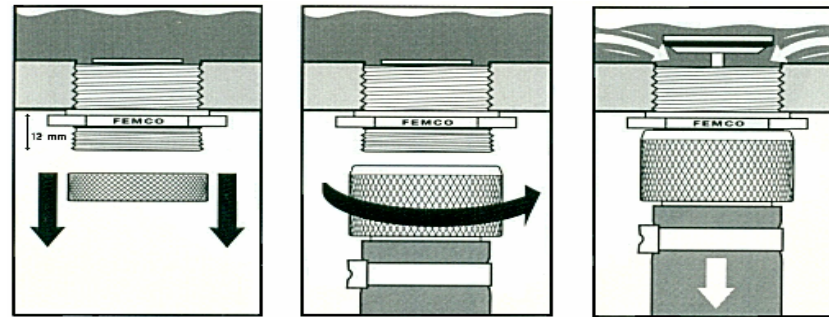
- The FEMCO® STANDARD SYSTEM can be used for most applications.
- Simply replace the factory fitted plug. No special tools needed.
- Remove the dust cap, which keeps the threads clean.
- Thread the drainer onto the drain plug to activate the system.
- Hot oil drains quickly and safely by gravity or suction.
- Remove the drainer, replace the dust cap
- Full range of sizes and thread patterns :- metric, UNF, UNC, UNS, BSW, BSP, NPT etc. Custom sizes available.

XXL

When to choose XXL

- Where there is a large factory fitted drain plug with a thread of M34 or greater.
- Much oil can be drained in a short time.
- Just remove the dust cap and wind on the drain tube.
- May be used with a suction or oil change system.
- XXL is available in all large thread sizes :- metric, UNF, UNC, UNS, BSW, BSP, NPT etc.

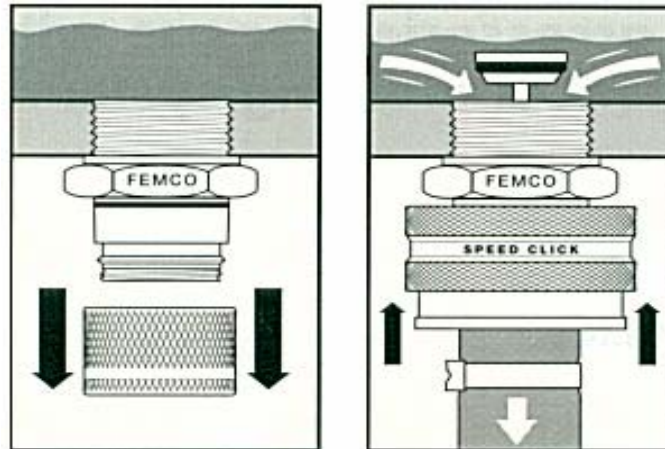
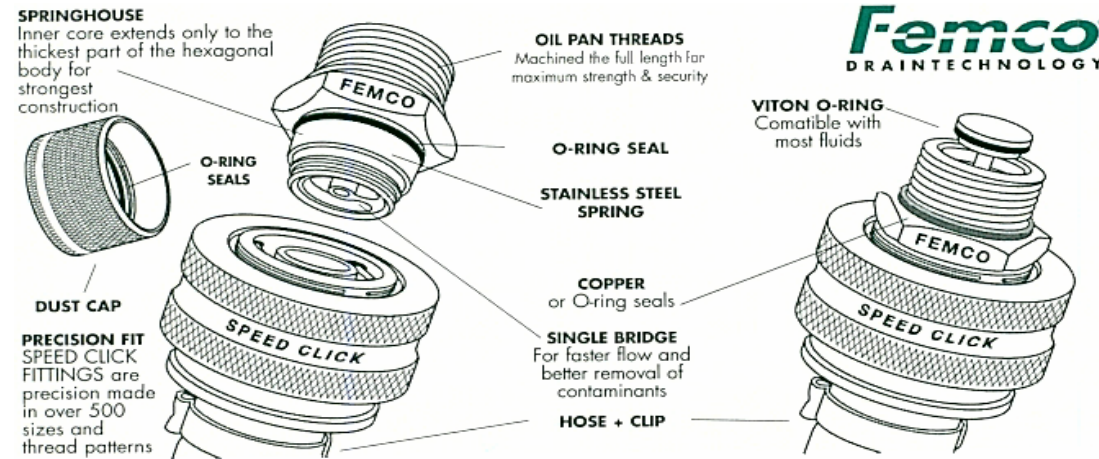
COMPACT



COMPACT

- For equipment with limited space or where ground clearance may be a problem, FEMCO® COMPACT SYSTEM provides a solution.
- Simply replace the factory fitted plug. No special tools needed.
- Remove the dust cap, which keeps the threads clean.
- Thread the drainer onto the drain plug to activate the system.
- Hot oil drains quickly and safely by gravity or suction.
- Remove the drainer, replace the dust cap
- Full range of sizes and thread patterns :- metric, UNF, UNC, UNS, BSW, BSP, NPT etc. Custom sizes available.

SPEED-CLICK



When to choose SPEED-CLICK

- Where there is sufficient room.
- Simply replace the factory fitted plug with the Femco® Speed-Click.
- Remove the quick-fit dust cap, which keeps the housing clean.
- Push on the "clicker".
- Hot oil drains quickly and safely by gravity or suction.
- Replace the dust cap - Job Done.
- Speed-Click is available in all thread sizes : metric, UNF, UNC, UNS, BSW, BSP, NPT etc.

PL REF	DESCRIPTION	SIZE	LARGE / SMALL	DRAIN TUBE	DUST CAP
560300	DRAIN PLUG - STANDARD (STAINLESS STEEL) INC. CHAIN	1/2" - 20 UNF	LARGE	560103	560122
560009	DRAIN PLUG - STANDARD	1/2" - 20 UNF	SMALL	560100	560123
560008	DRAIN PLUG - STANDARD	9/16" - 18 UNF	SMALL	560100	560123
560002	DRAIN PLUG - STANDARD	3/4" - 14 BSP	LARGE	560100	560122
560007	DRAIN PLUG - STANDARD	3/4"- 14 NPT	LARGE	560103	560122
560011	DRAIN PLUG - STANDARD	1" - 11 BSP	LARGE	560103	560122
560004	DRAIN PLUG - STANDARD	1" - 18 UNS	LARGE	560103	560122
560006	DRAIN PLUG - STANDARD	M16 X 1.5	SMALL	560100	560123
560010	DRAIN PLUG - STANDARD	M18 X 1.5	SMALL	560100	560123
560003	DRAIN PLUG - STANDARD	M22 X 1.5	LARGE	560103	560122
560000	DRAIN PLUG - STANDARD	M24 X 1.5	LARGE	560103	560122
560005	DRAIN PLUG - STANDARD	M24 X 2.0	LARGE	560103	560122
560001	DRAIN PLUG - STANDARD	M26 X 1.5	LARGE	560103	560122
560012	DRAIN PLUG - STANDARD	M30 X 1.5	LARGE	560103	560122
560100	DRAIN TUBE - STANDARD	250MM	SMALL	560100	/
560103	DRAIN TUBE - STANDARD	250MM	LARGE	560103	/
560122	DUST CAP - STANDARD	LARGE	LARGE	/	560122
560123	DUST CAP - STANDARD	SMALL	SMALL	/	560123
560402	DRAIN PLUG - COMPACT	1/2" - 20 UNF	SMALL	560500	560121
560407	DRAIN PLUG - COMPACT	9/16" - 18 UNF	SMALL	560500	560121
560404	DRAIN PLUG - COMPACT	3/4" - 14 BSP	LARGE	560501	560120
560408	DRAIN PLUG - COMPACT	3/4" - 14 NPT	LARGE	560501	560120
560403	DRAIN PLUG - COMPACT	1" - 18 UNS	LARGE	560501	560120
560405	DRAIN PLUG - COMPACT	M18 X 1.5	SMALL	560500	560121
560400	DRAIN PLUG - COMPACT	M22 X 1.5	SMALL	560500	560121
560406	DRAIN PLUG - COMPACT	M24 X 1.5	SMALL	560500	560121
560401	DRAIN PLUG - COMPACT	M26 X 1.5	LARGE	560501	560120
560501	DRAIN TUBE - COMPACT	250MM	LARGE	560501	/
560500	DRAIN TUBE - COMPACT	250MM	SMALL	560500	/